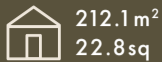
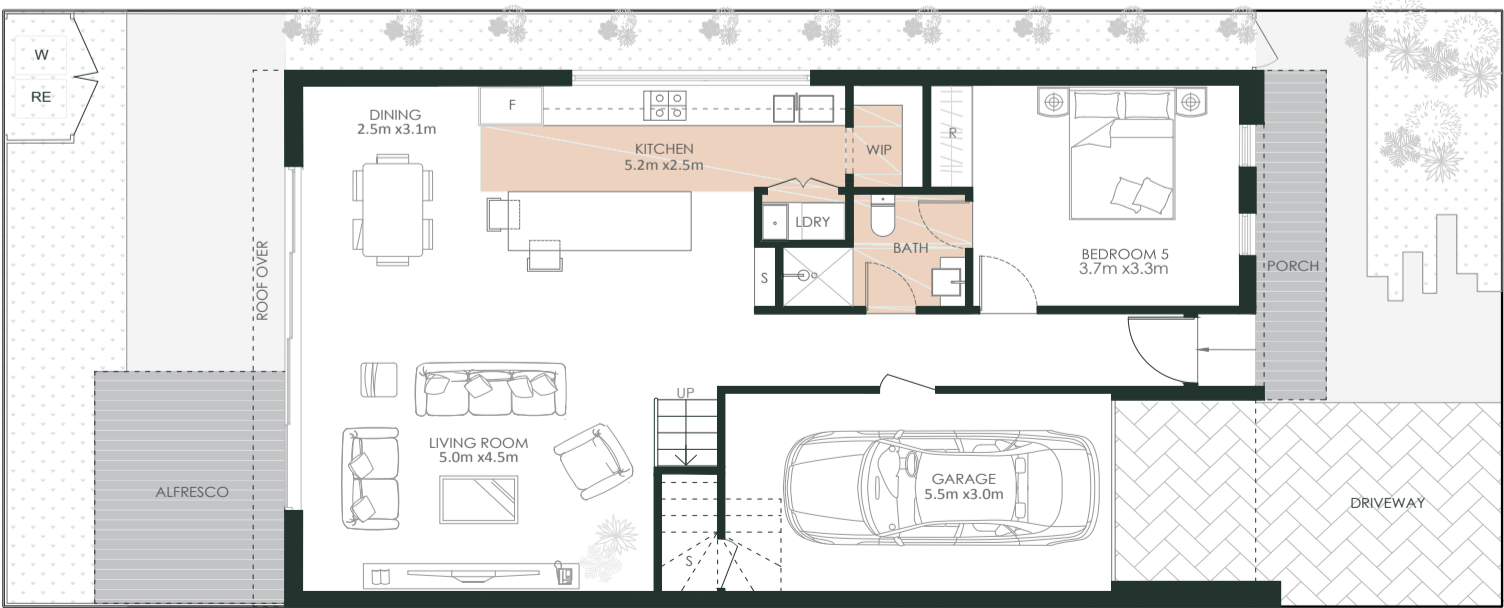
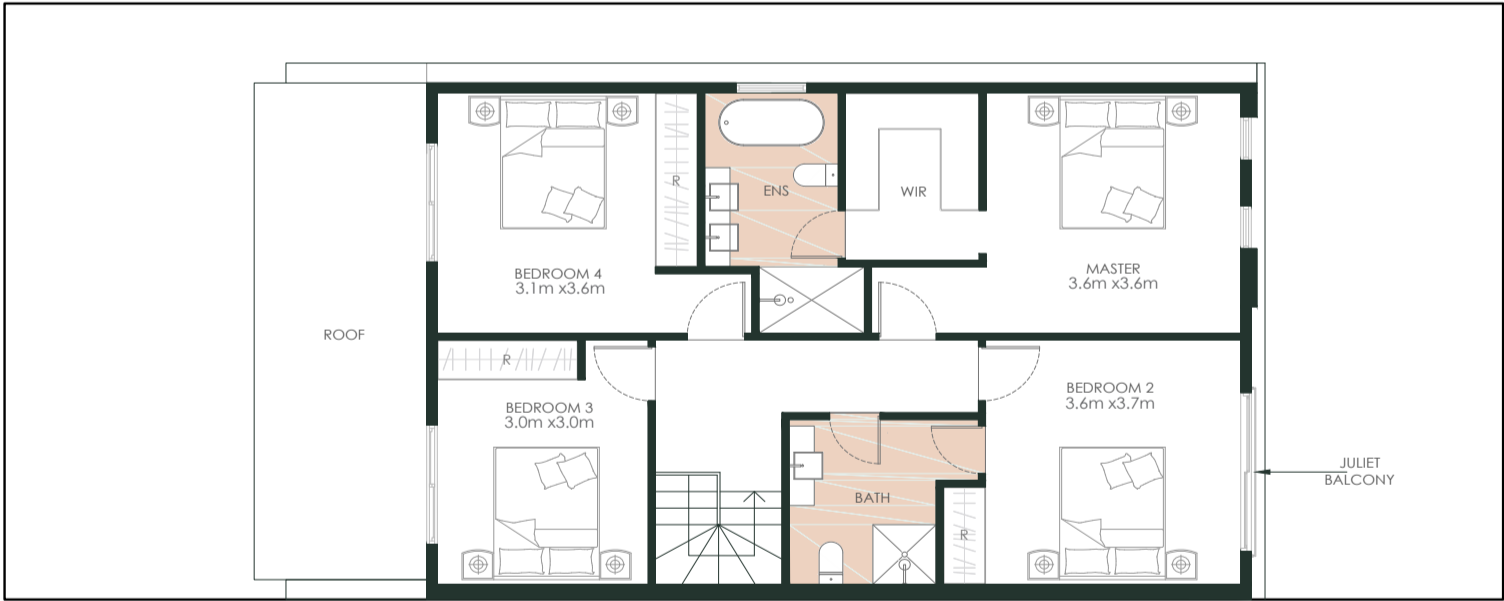


Valley Rise
LEPPINGTON

\$455,000
212/9M/300



*Total house size includes porch and alfresco.



*Disclaimer: This floor plan has been based on a standard facade, not the one depicted in the artist's impression and has been produced for marketing purposes and may not be representative of the final facade application and is to be used as a guide only. Floor plans are not to scale and do not contain all details included in the Inclusions of the project and should not be relied upon for exact dimensions. All efforts have been made to ensure its accuracy at the time of production. During the design development, approval process, construction drawing and detailing process, plans may require alterations, resulting in changes to sizes and/or layouts, and the visual appearance of the designs.

**Disclaimer: All imagery and photography are used for illustration purposes only and may depict features, fixtures and fittings that are not supplied by the builder and / or developer unless otherwise specified. These may include items such as furnishings, landscaping, retaining walls, front fencing, letterbox, lighting, blinds, decorative finishes and facade upgrades. Please contact the builder and / or developer for a full listing of inclusions.